

INCREASED FLOW RATES POST PRODUCTION TESTING AT RBD03 FOLLOWING WELL CLEAN OUT

HIGHLIGHTS

- Flow testing has commenced at RBD03 following a work over to clean out this legacy borehole
- Encouragingly RBD03 flowed at an average gas flow rate of 201 Mscfd over the initial 7-day period
- This flow rate is 35% higher than the previous flow rate measured prior to the well clean out

D3 Energy Limited (**ASX:D3E**) (**D3 Energy** or the **Company**) is pleased to announce an update from its multi-well production testing program at ER315 located in the Free State, South Africa.

RBD03 Flow Rates Increase Following Work Over

As previously announced, the Company undertook a multi-well production testing program at Bloemskraal last year which included RBD03 a gold exploration borehole drilled in 1982. Analysis of the initial production test in July and August last year showed indications that there may have been some obstructions or debris in the wellbore.

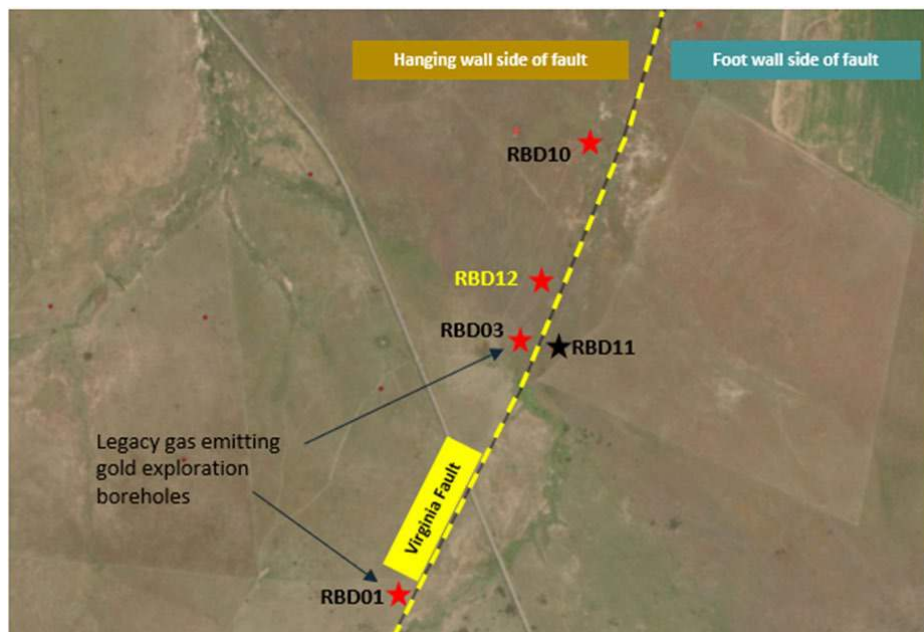
A work over to clean out any obstructions was performed at RBD03 on 7 May 2025 and notwithstanding that some issues were encountered with a historical undocumented hole size change curtailing operations, the well was nonetheless partially cleaned out and shut in to allow the reservoir pressure to build back up prior to retesting.

This flow testing commenced on 13 June 2025 following the build-up period and the 7-day results from this testing demonstrate a 35% increase in the stabilised flow rate at RBD03 when compared with results gained from the previous testing prior to the clean out. This most recent testing recorded an average flow rate of 201 Mscfd for a 7-day period, with the initial test last year averaging 149 Mscfd for the first 7 days.

Total gas produced over the initial 7-day testing period was 1,396 Mscf [**Table 1**] and testing will continue for another 7 days before the well will be shut in to analyse the pressure buildup data.



Workover Rig on Location



Well Location Map

Table 1: Listing Rule 5.30 required Information	
Well Name	RBD03 (Bloemskraal Nr1)
Location	X 26.939611 Y -28.218694
Well Type	Vertical with 9 deflections
Date Drilled	1982 – Old Gold Exploration Well
Permit	ER315
Entity Holders	Motuoane Energy Pty Ltd (100% owned subsidiary)
Resource	Helium and Methane
Formation	Witwatersrand Quartzite
Gross Thickness	Gross thickness Karoo 440m, Quartzite 152m (TD 592m)
Net Pay Thickness	Unconformity fracture zone beneath dolerite - 3m (pay zone at ±445m below surface)
Geological Rock Types	Sandstone, Siltstone, Shale, Dolerite, Quartzite, Fractured Quartzite
Depth of Zones Tested	400m-592m
Type of Test and Duration	7-day stabilised flow test
Phases Recovered	Gas
Other Types of Recovery	N/A
Flow Rates	201 Mscfd (average rate over 7 days)
Choke Size	No choke
Volume Recovered	1,396 Mscf

Authorised for release by the Board of Directors of D3 Energy Limited

For further information please contact:

D3 Energy

T: +61 2 8072 1400

E: admin@d3energy.com.au

W: www.d3energy.com.au

Investor and Media Contact

Sam Macpherson

VECTOR Advisors

T: +61 401 392 925

About D3 Energy Limited

D3 Energy was incorporated for the purpose of acquiring African based assets which are prospective for the exploration and production of both natural gas and helium. The Company's primary focus will be on its natural gas and helium assets located in the Free State Province, onshore South Africa where the Company's exploration work has identified an exciting natural gas and helium opportunity and where a significant Contingent and Prospective Resource has been delineated.